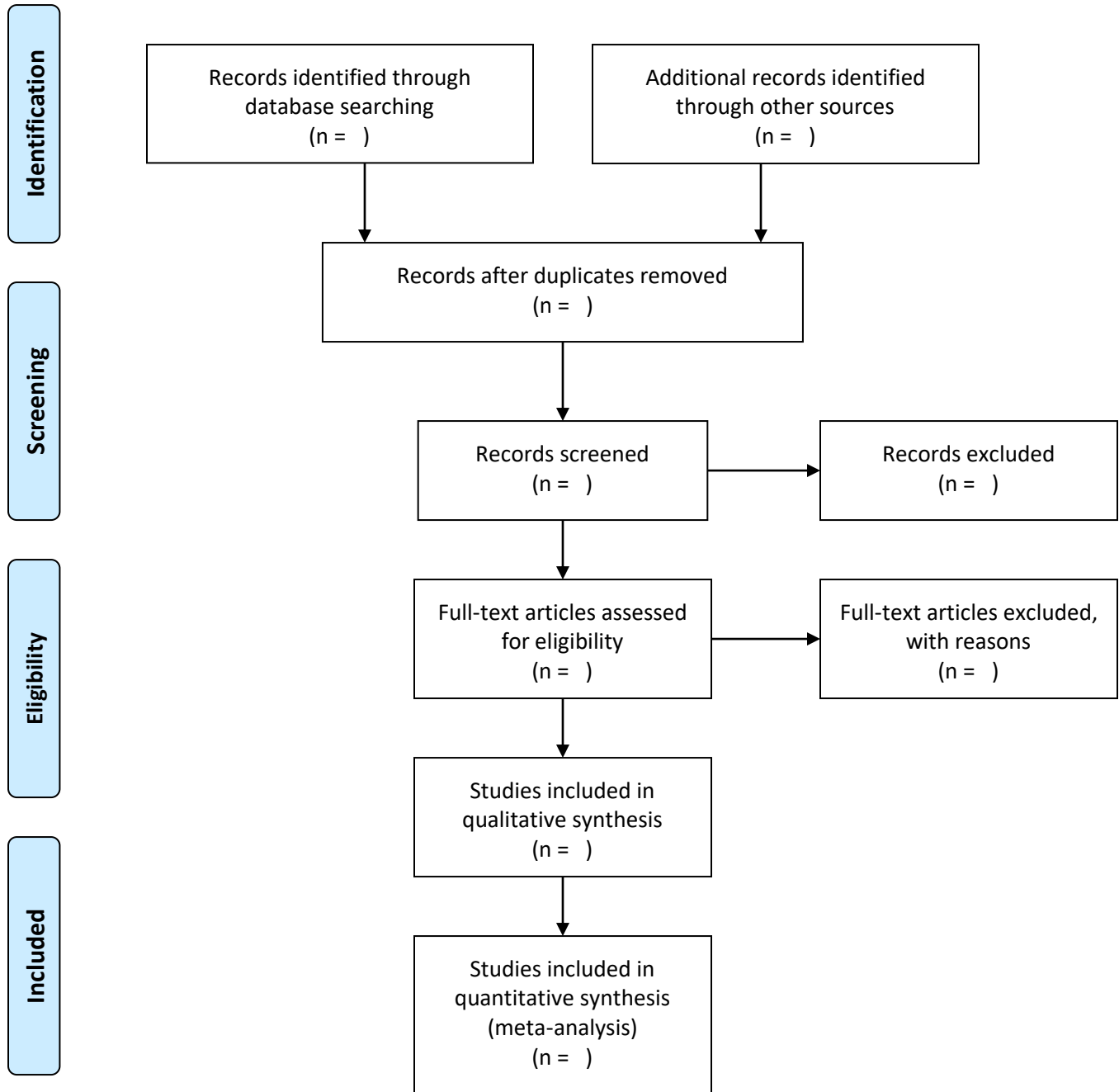


Systematic Review/Meta-Analysis



PRISMA 2009 Flow Diagram For Peerperforming Systemamntic Review/ Meta-Analysis



From: Moher D, Liberati A, Tetzlaff J, Altman DG, The PRISMA Group (2009). Preferred Reporting Items for Systematic Reviews and Meta-Analyses: The PRISMA Statement. PLoS Med 6(7): e1000097. doi:10.1371/journal.pmed1000097
For more information, visit www.prisma-statement.org.